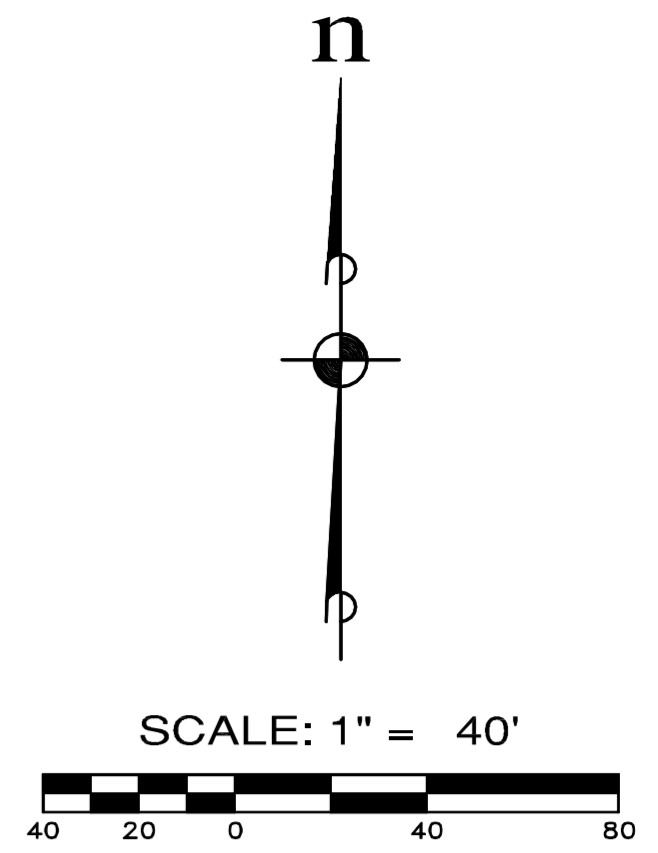
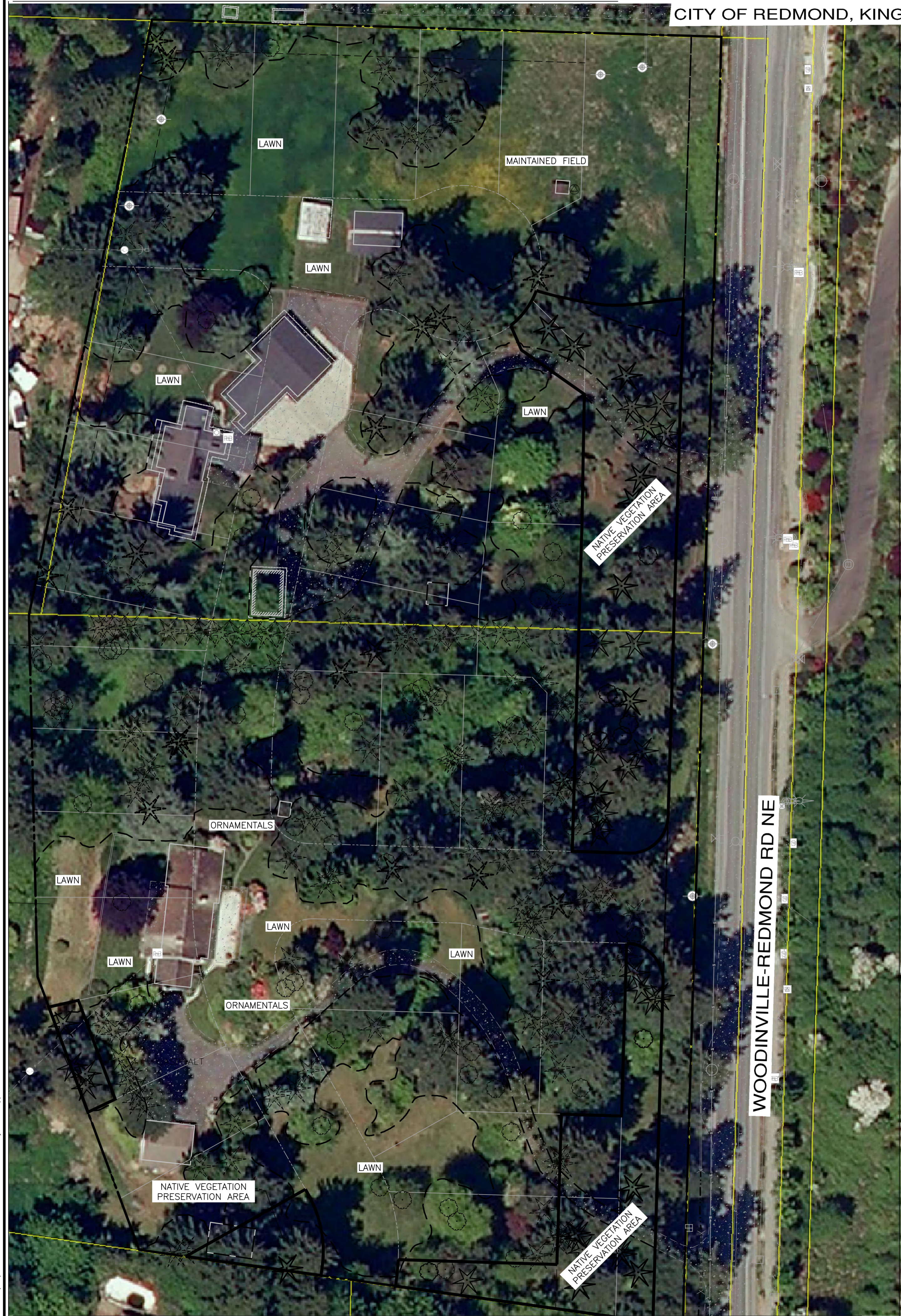


BETROZOFF JONES PRELIMINARY PLAT

CITY OF REDMOND, KING COUNTY WASHINGTON

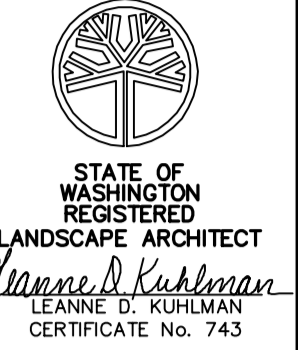


NATIVE VEGETATION RETENTION

GROSS SITE AREA:	350,366 SF (8.04 AC)
R/W DEDICATION (SR-202):	17,150 SF (0.39 AC)
NET SITE AREA:	333,216 SF (7.65 AC)
NATIVE VEGETATION COVER:	193,869 SF (4.45 AC)
NON-NATIVE COVER:	139,347 SF (3.20 AC)
20% RETENTION REQUIRED:	38,773 SF (0.89 AC)
N.V.R. AREA PROVIDED:	43,297 SF (0.99 AC)

AREAS OF NON-NATIVE COVER INCLUDE DRIVEWAYS, STRUCTURES, HARD SURFACES, LAWNS, GARDENS, ORNAMENTAL PLANTINGS, ETC.

REVISIONS		
NO.	DESCRIPTION/DATE	BY
1	REVISED PER PREP MEETING 6/13/13	EGL
2	REVISED PER PREP MEETING 7/25/13	EGL
3	REVISED PER PREP MEETING 8/22/13	EGL
4	REVISED PER PREP MEETING 9/05/13	EGL



ESM CONSULTING ENGINEERS, L.L.C.
 33400 8th Ave S, Suite 205
 Federal Way, WA 98003
 (206) 836-4113
 (252) 297-9103
 FEDERAL WAY, WASHINGTON
 www.esmcivil.com
 Civil Engineering Public Works | Land Surveying Project Management | Land Planning Landscape Architecture

BETROZOFF JONES, L.L.C.
BETROZOFF JONES
 PRELIMINARY NATIVE VEGETATION PRESERVATION PLAN
 WASHINGTON
 REDMOND

JOB NO.:	1426-002-012
DWG. NAME:	PP-08
DESIGNED BY:	LDK
DRAWN BY:	LDK
CHECKED BY:	
DATE:	09/11/2013
DATE OF PRINT:	

File: \\ESM-0055\1426\002\012\enbshh\Ex-06.dwg
 Plotted: 9/11/2013 11:29 AM
 Plotted By: Don Lopez